



Ministerie van Volksgezondheid,  
Welzijn en Sport

## Monitor in- en uitstroom Wlz

Naar leveringsvorm

2020 tm week 25

O.b.v. CBS gegevens 3 juli 2020



Ministerie van Volksgezondheid,  
Welzijn en Sport



## Inhoud

1. Mutaties vanaf week 12
2. Cliënten met Wlz-zorg
3. VV-verblijf
4. VV-VPT
5. VV-MPT /combi MPT/pgb
6. VV-pgb (sec)
7. GHZ-verblijf
8. GHZ-VPT
9. GHZ-MPT /combi MPT/pgb
10. GHZ-pgb (sec)

## 1. Mutaties vanaf week 12

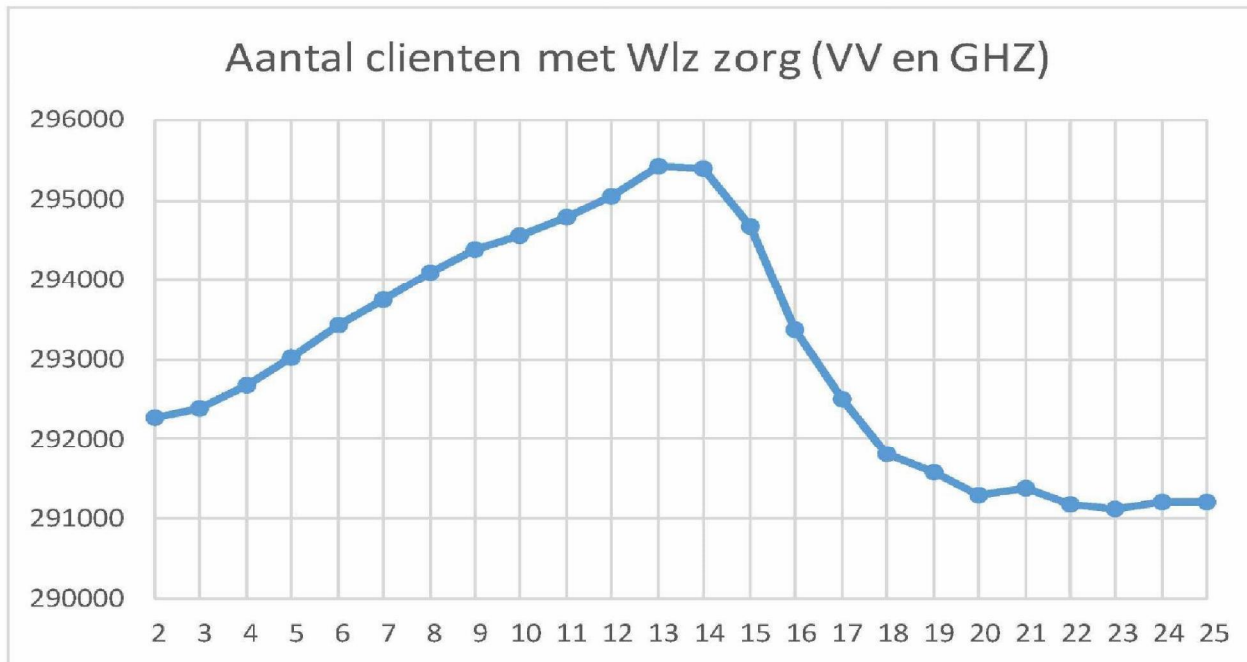


(t.o.v. week 11)

Week	Verpleging en verzorging				Gehandicaptenzorg				Totaal
	Verblijf	VPT	MPT	pgb sec	Verblijf	VPT	MPT	pgb sec	
12	15	45	140	0	155	0	0	0	155
13	-50	15	330	25	140	0	0	0	140
14	-440	15	395	-5	90	0	0	0	90
15	-1.015	-5	300	-30	45	0	0	0	45
16	-1.370	-65	180	-25	-10	5	45	-10	-1.250
17	-940	-15	105	-20	-30	-5	60	-10	-855
18	-750	-20	80	-35	-35	0	35	-5	-730
19	-305	-30	50	-35	-5	20	35	-10	-280
20	-265	10	-40	-20	5	5	25	-15	-295
21	5	5	90	-30	15	0	0	-15	15
22	-10	-15	-150	-35	15	5	20	-15	-185
23	10	-45	-40	-40	70	10	25	-25	-35
24	305	0	-215	-45	100	0	0	-15	85
25	<b>215</b>	-25	<b>-130</b>	-45	110	5	5	-15	<b>120</b>
week 12-19	-4.855	-60	1.580	-125	350	20	330	55	-2.705
week 12-20	-5.120	-50	1.540	-145	355	25	355	40	-3.000
week 12-21	-5.115	-45	1.630	-175	370	25	390	30	-2.890
week 12-22	-5.125	-60	1.480	-210	385	30	410	15	-3.075
week 12-23	-5.115	-105	1.440	-250	455	40	435	-10	-3.110
week 12-24	-4.810	-105	1.225	-295	555	40	455	-30	-2.965
week 12-25	<b>-4.595</b>	-130	1.095	-340	665	45	460	-45	-2.845

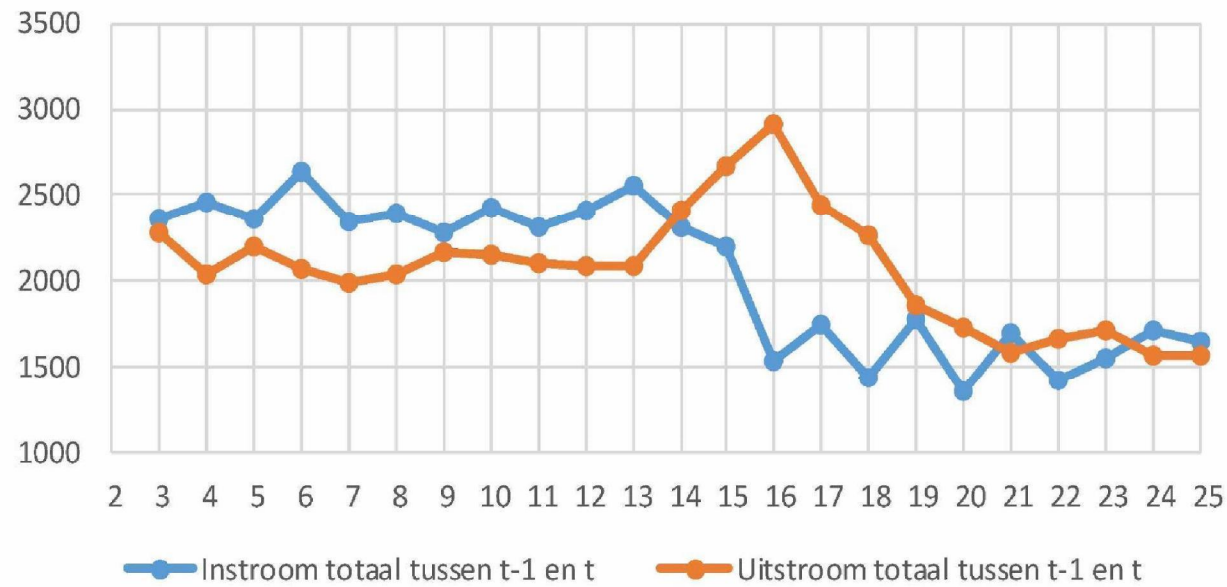


## 2. Cliënten met Wlz-zorg



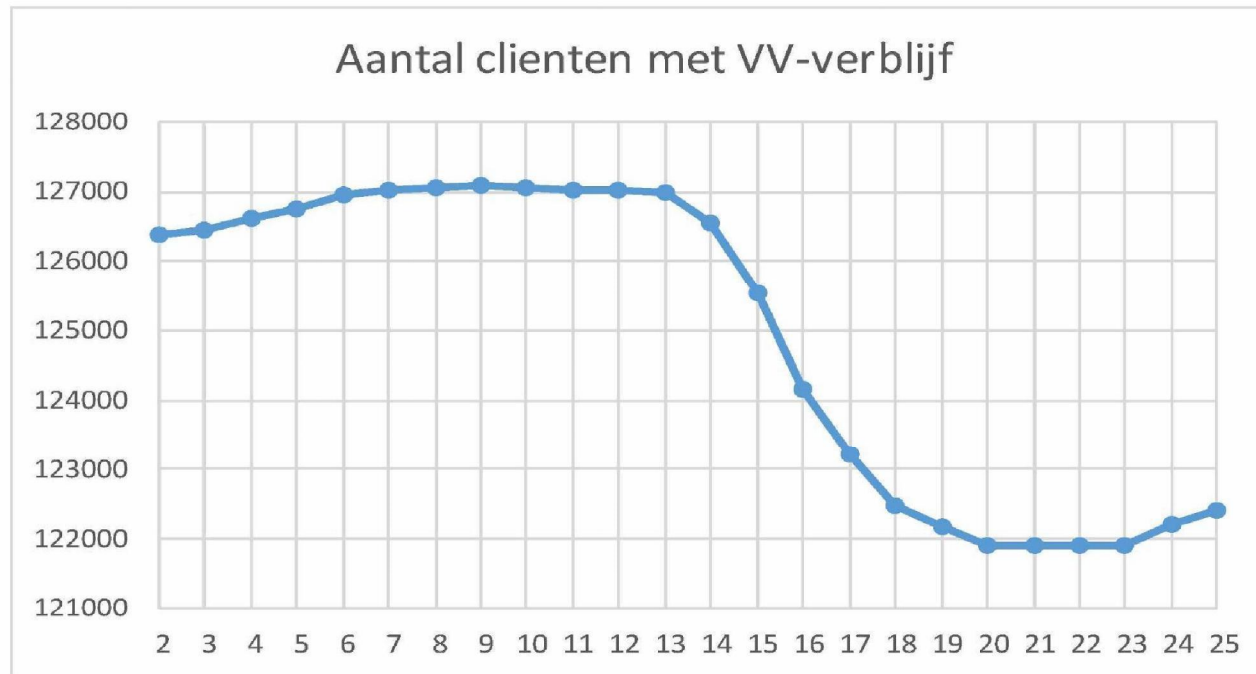


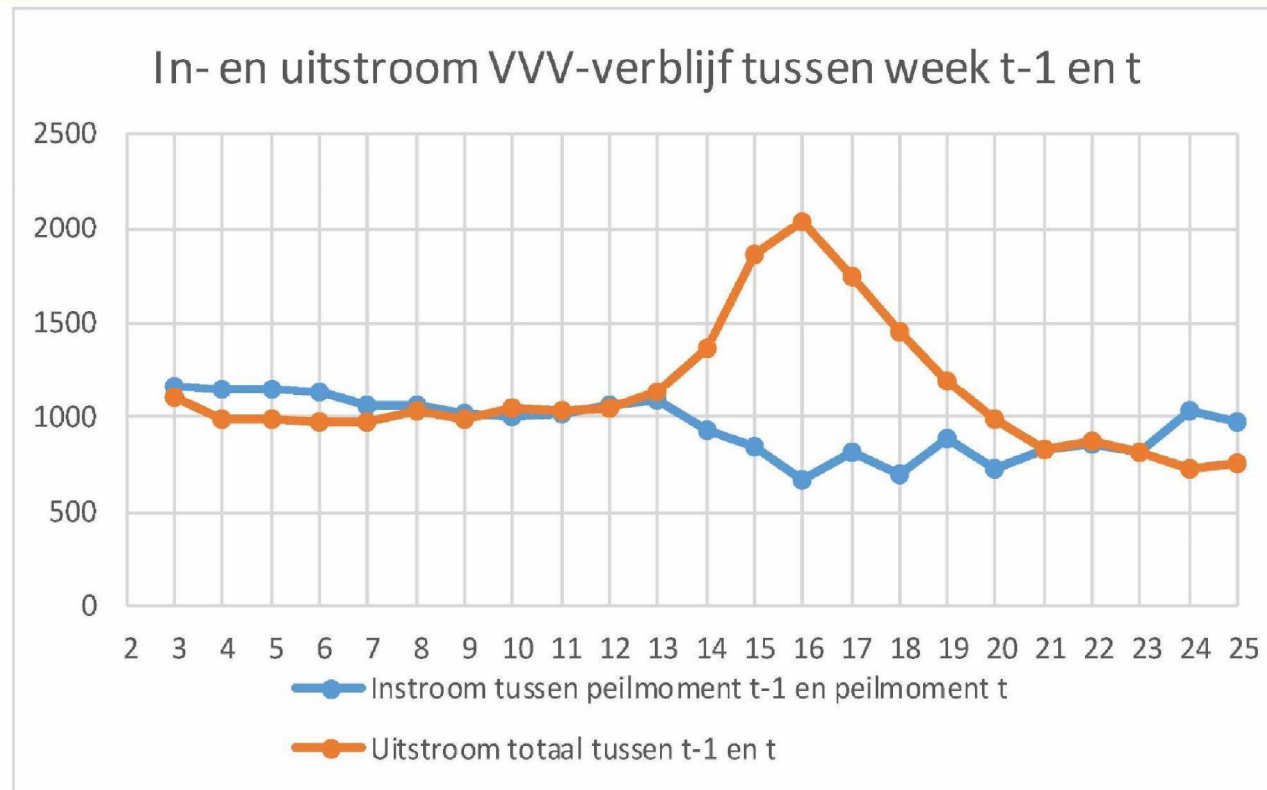
### In- en uitstroom cliënten met Wlz-zorg tussen week t-1 en t

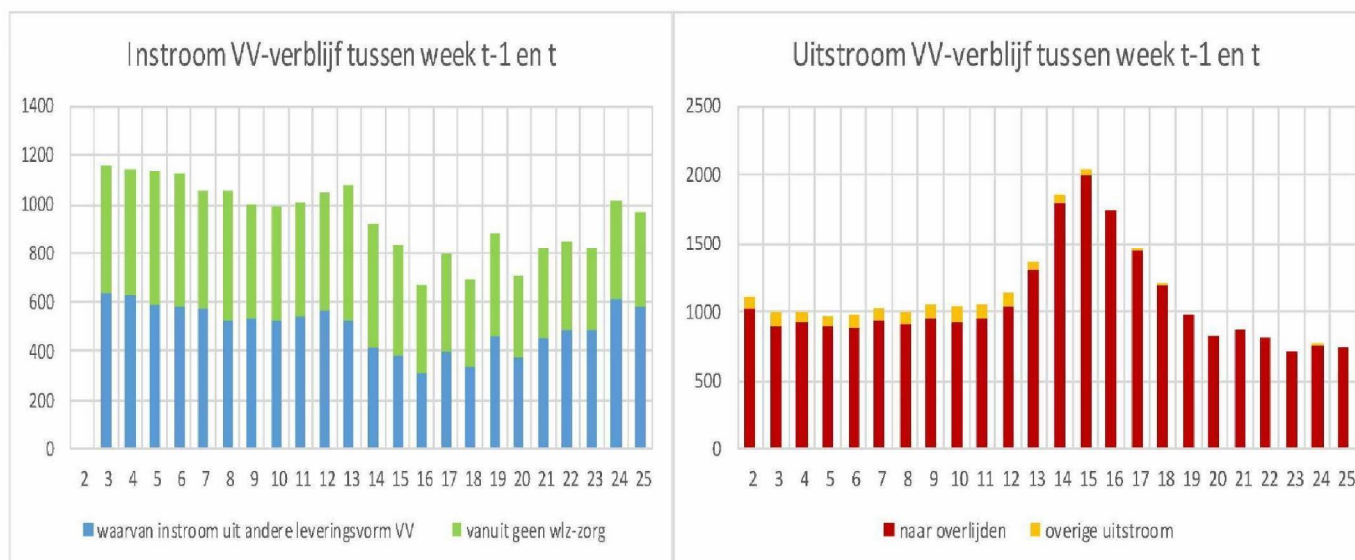




## 2. VV verblijf

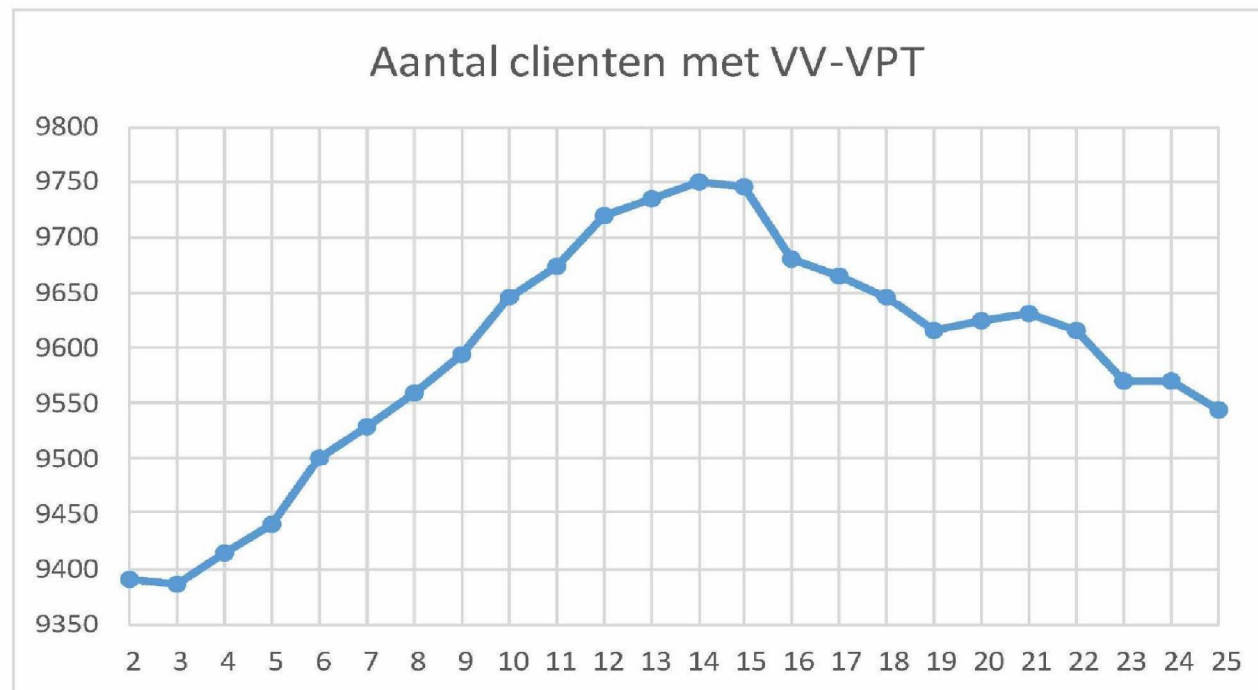




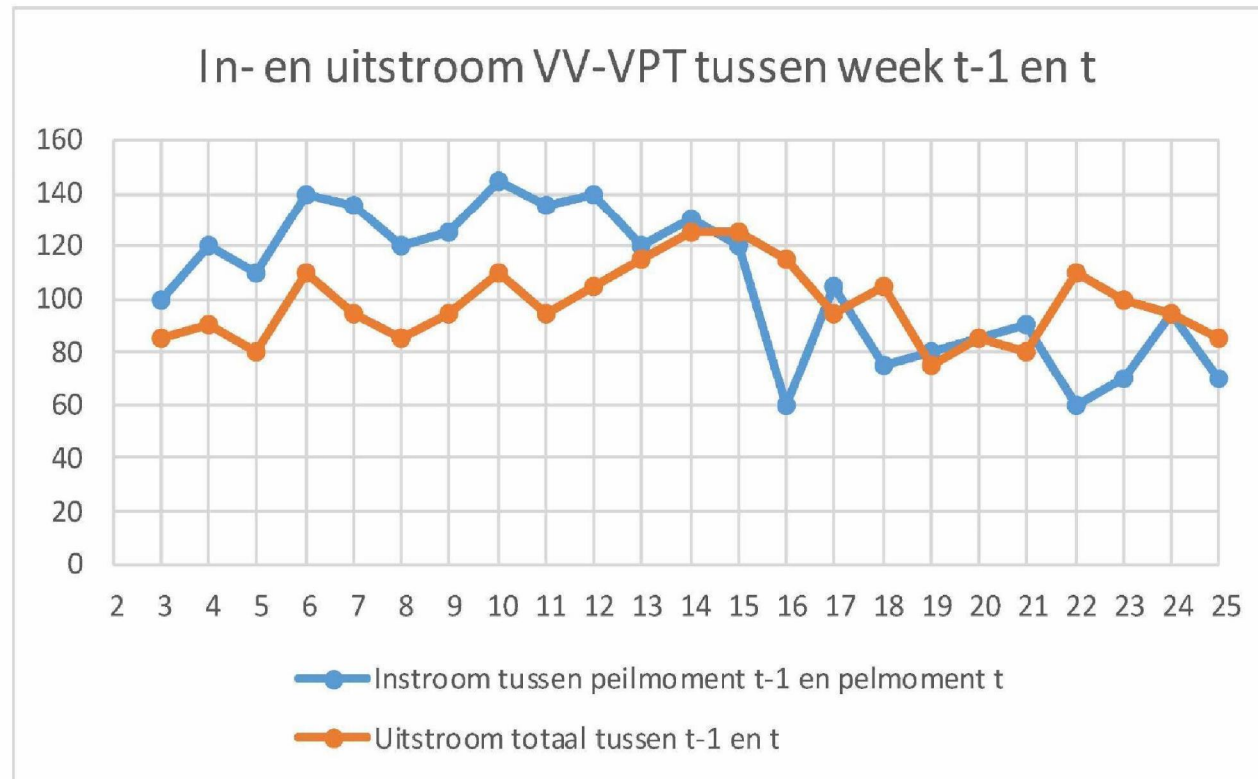




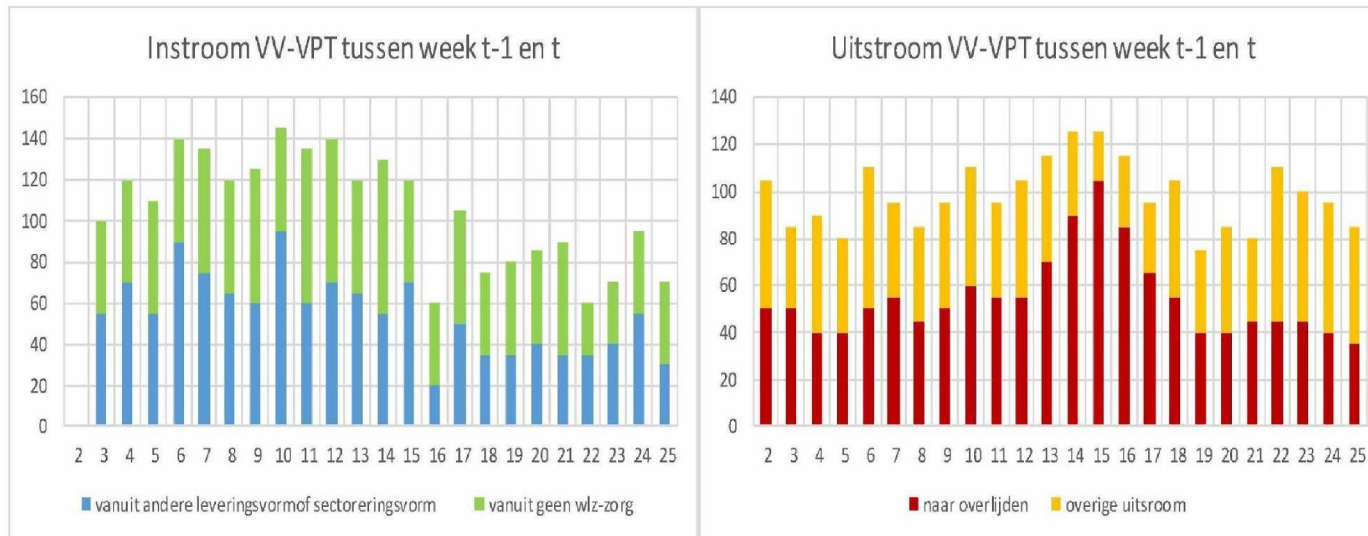
### 3. VV- Volledig Pakket thuis



## VV VPT in- en uitstroom

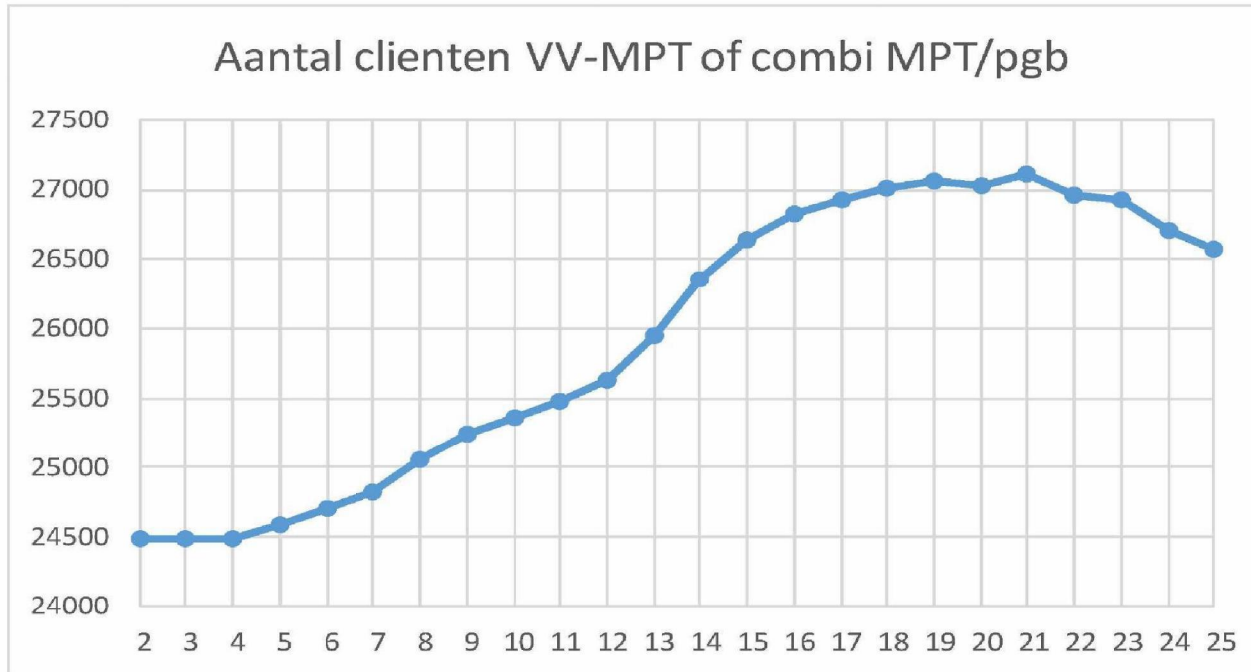


# VV VPT in- en uitstroom

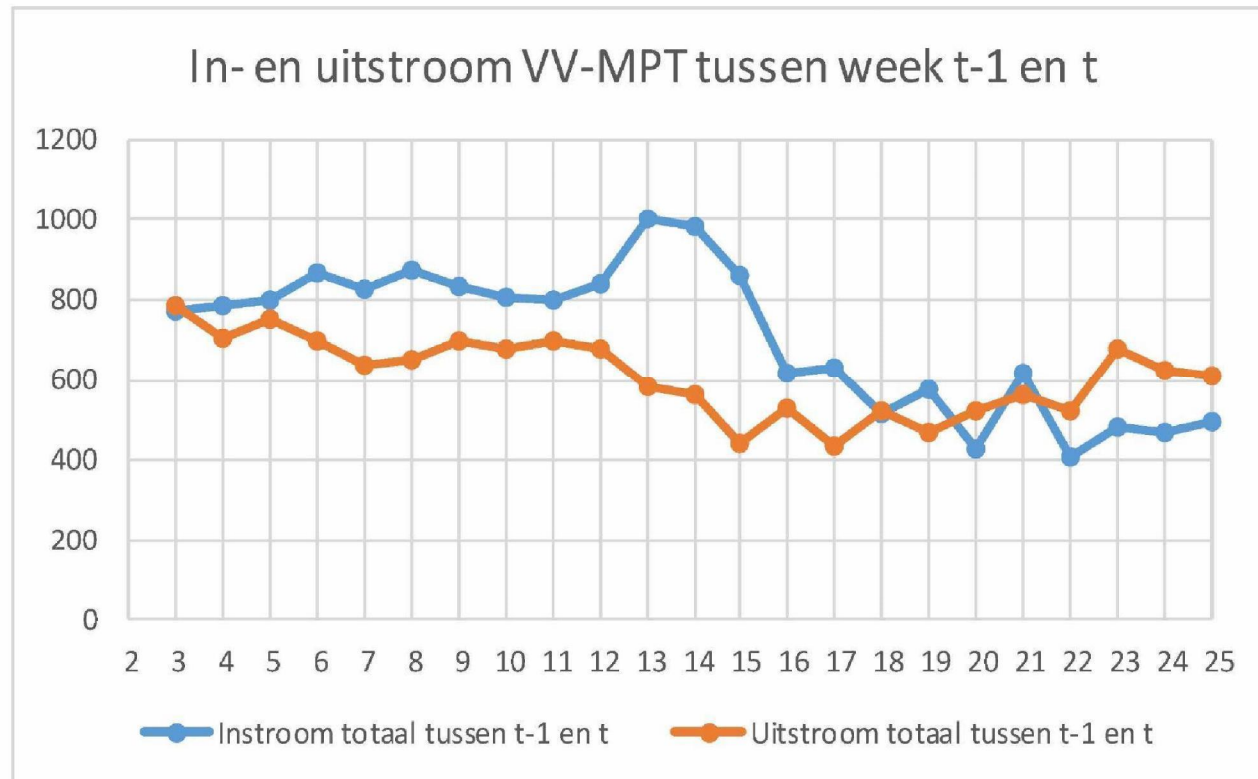




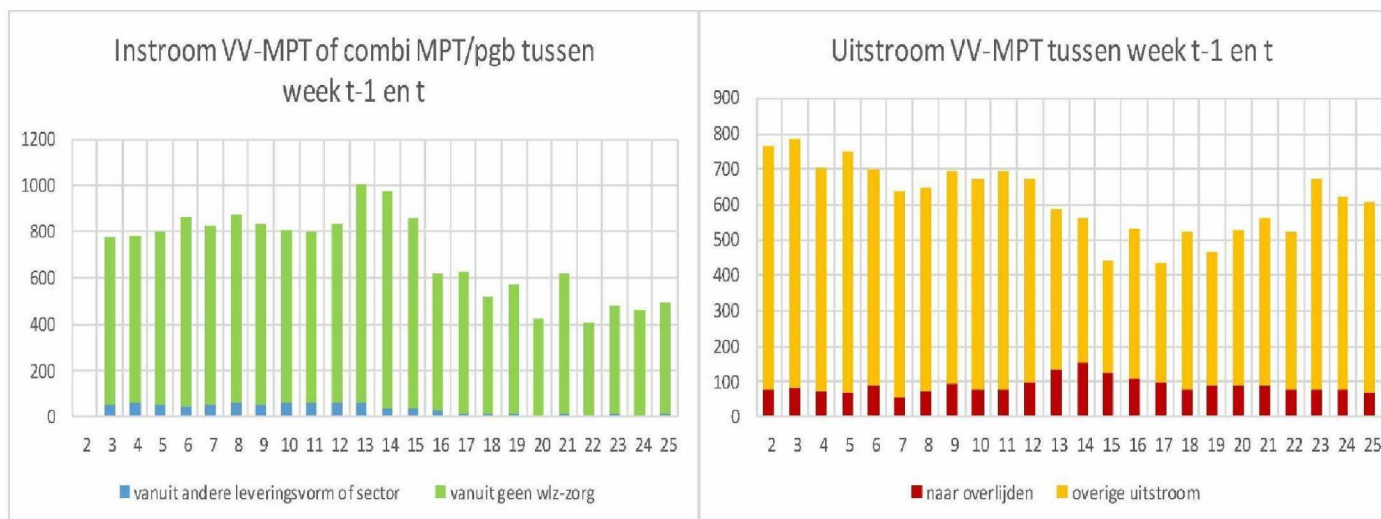
#### 4. VV Modulair Pakket thuis of combi MPT/pgb



## VV MPT in- en uitstroom

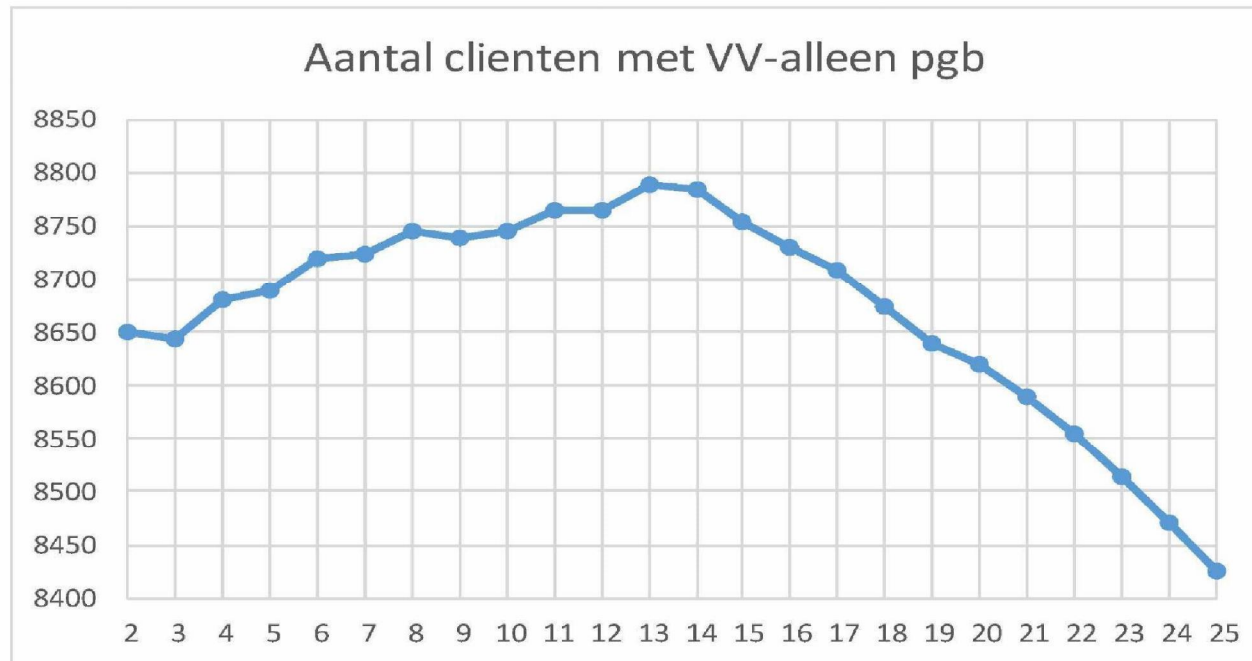


## VV MPT in- en uitstroom

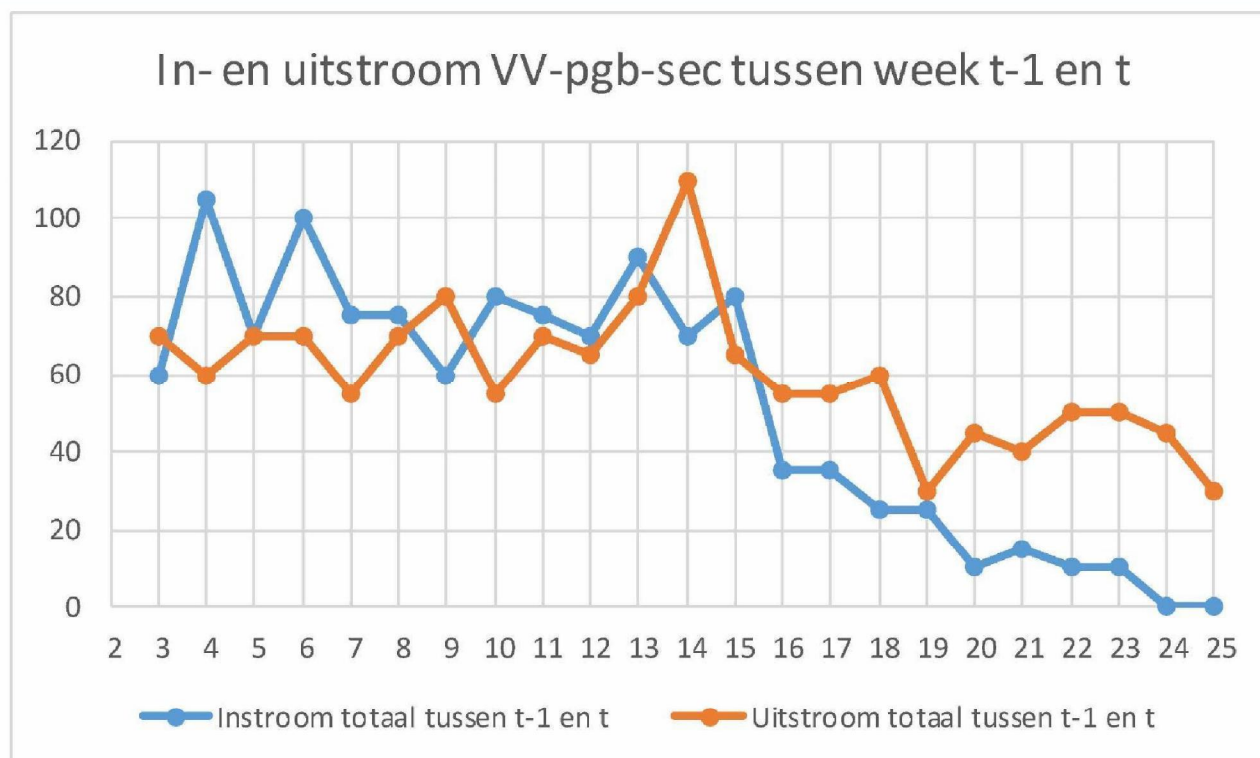




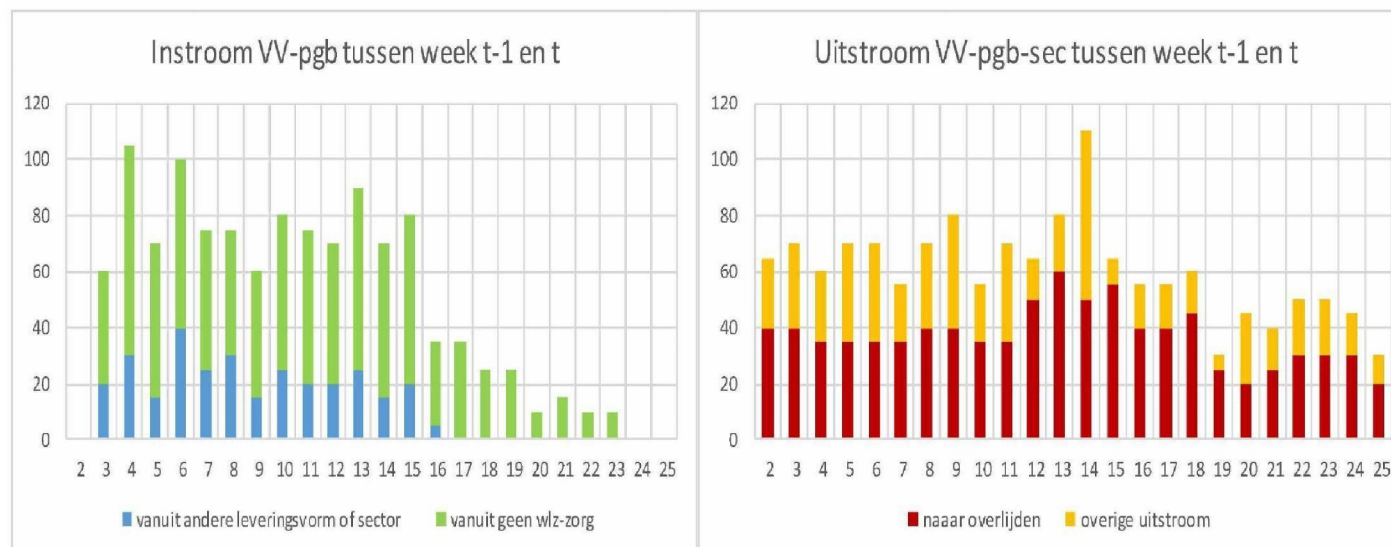
## 5. VV pgb-sec



## VV pgb-sec in- en uitstroom

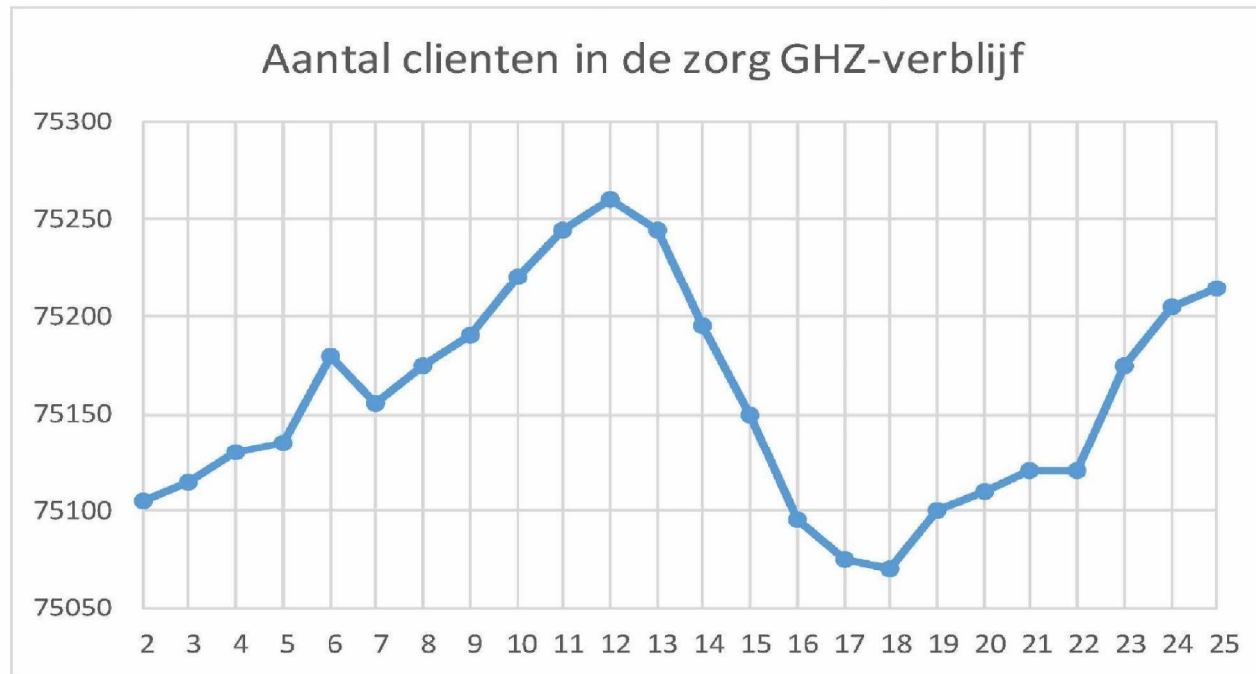


## VV pgb-sec in- en uitstroom

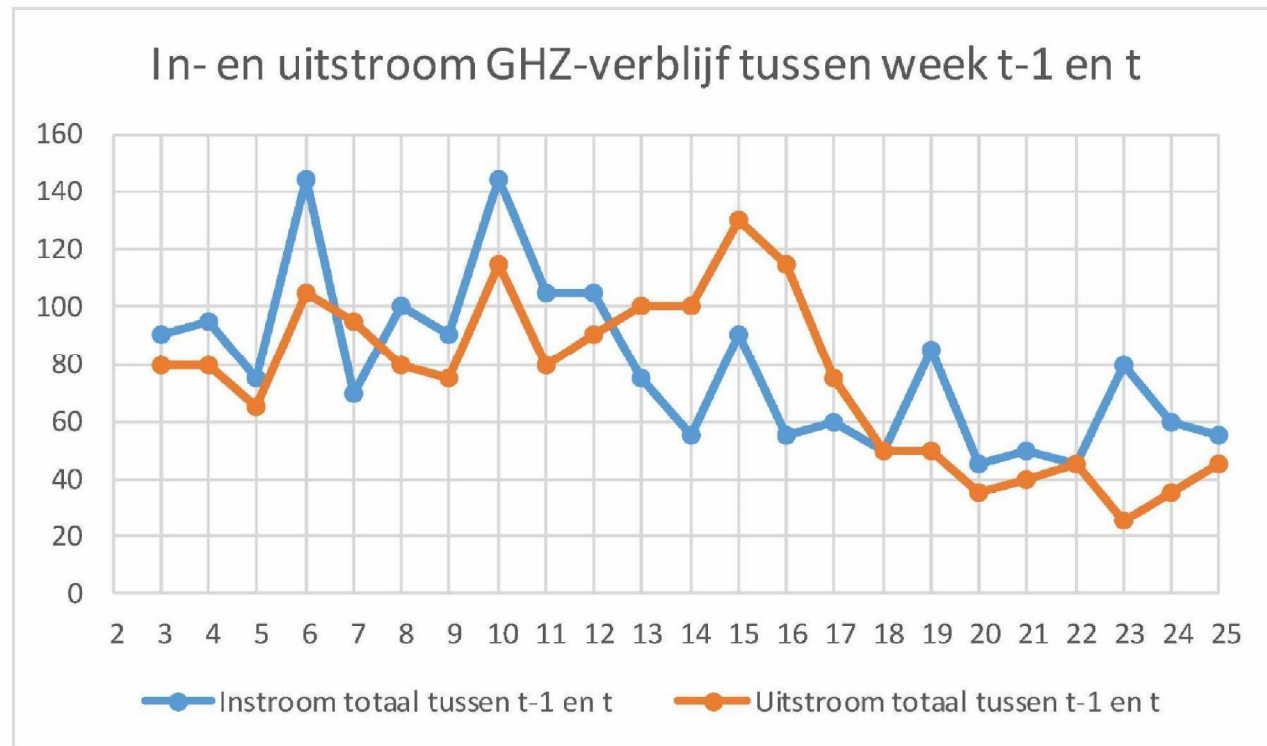




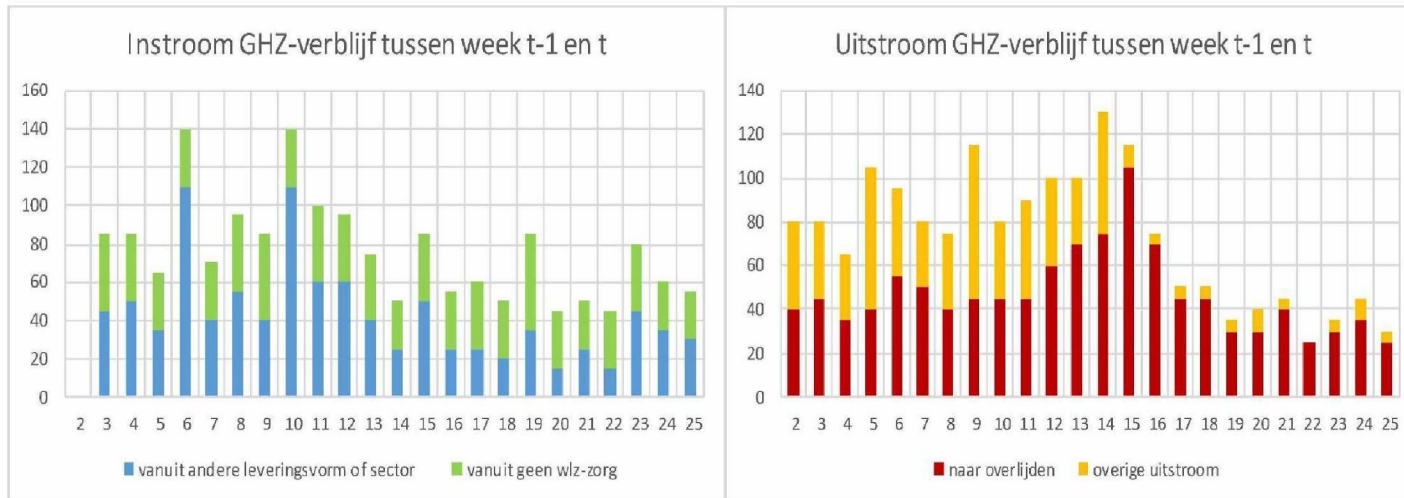
## 6. Gehandicaptenzorg verblijf



## GHZ-verblijf in- en uitstroom

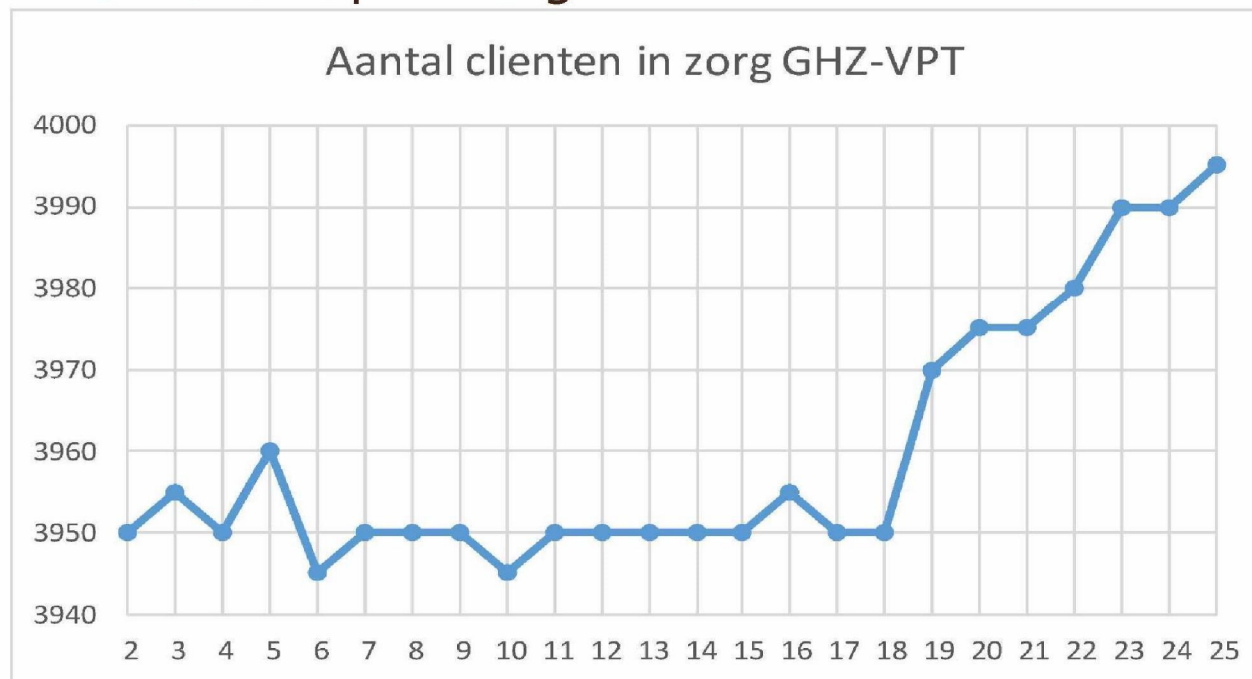


# GHZ verblijf in- en uitstroom





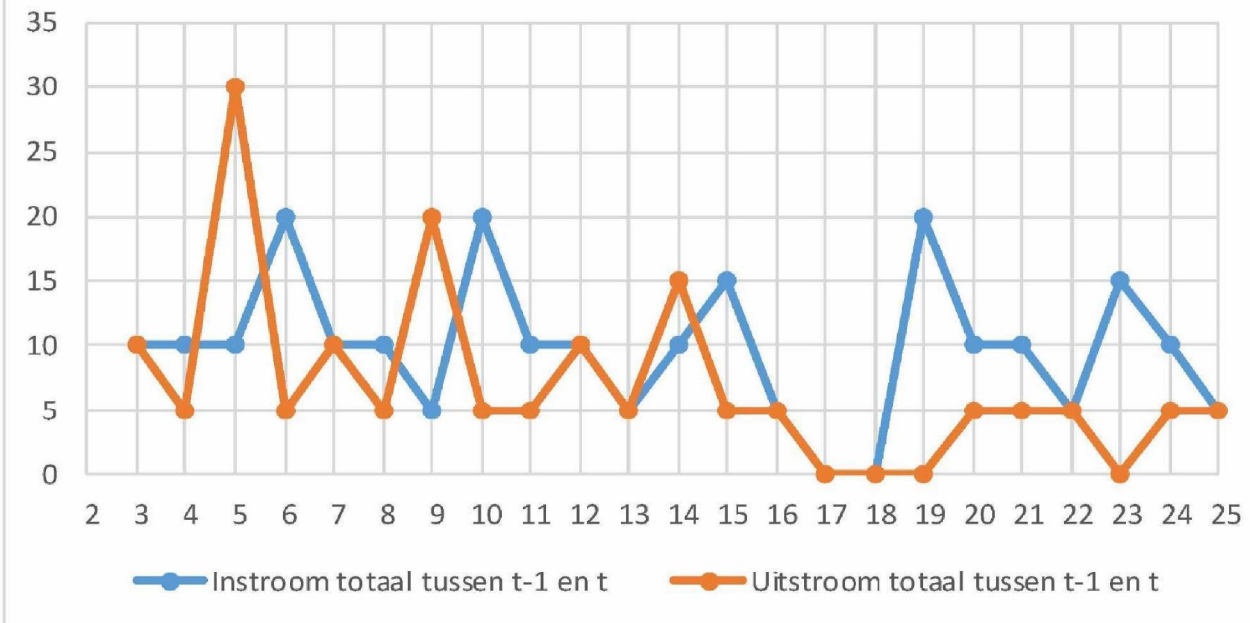
## 7. Gehandicaptenzorg VPT



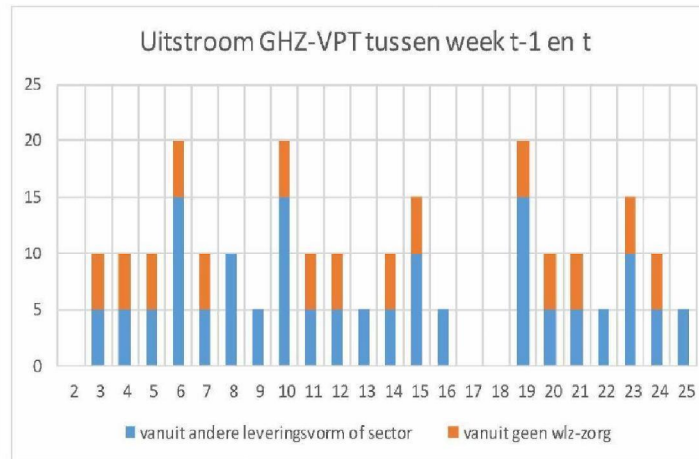
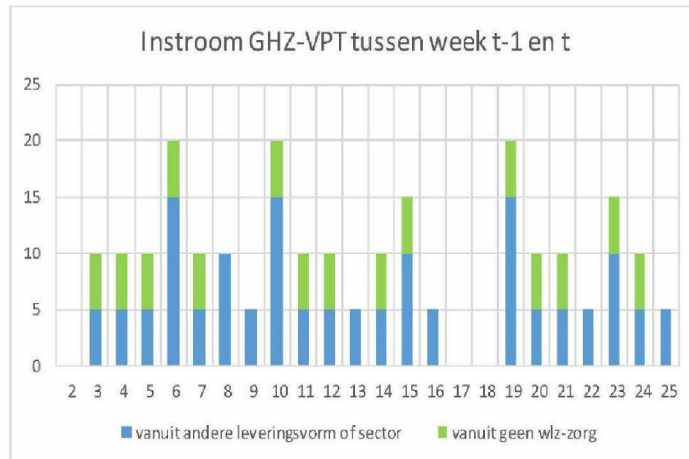
## GHZ-VPT in- en uitstroom



In- en uitstroom GHZ-VPT tussen week t-1 en t

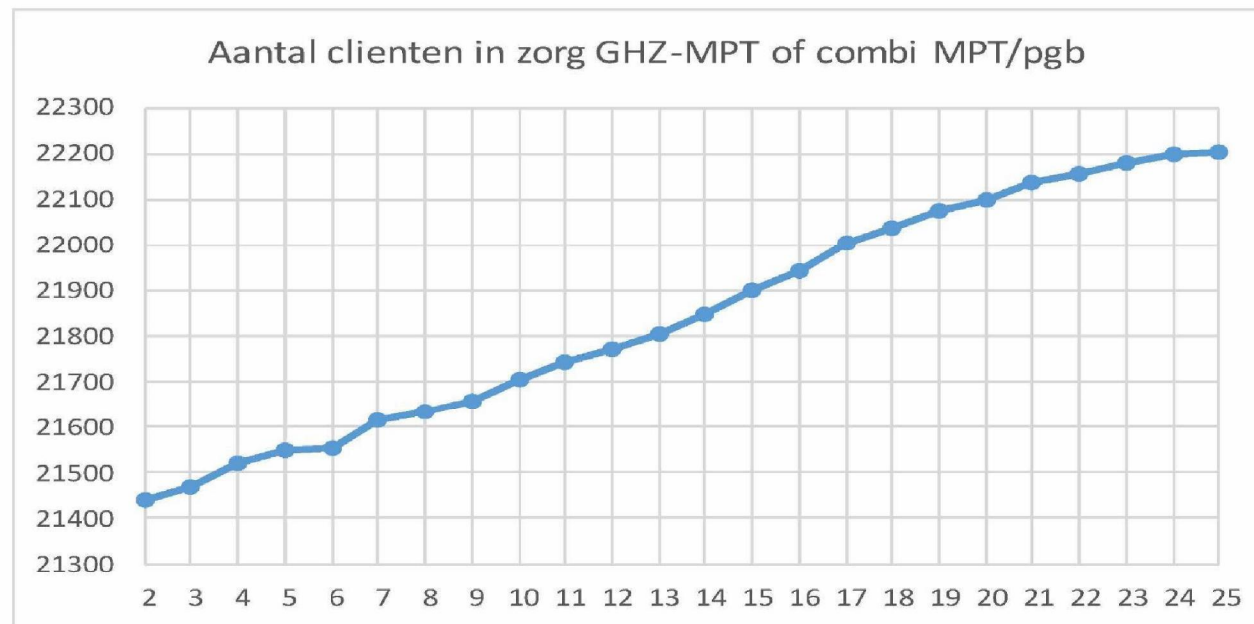


# GHZ VPT in- en uitstroom

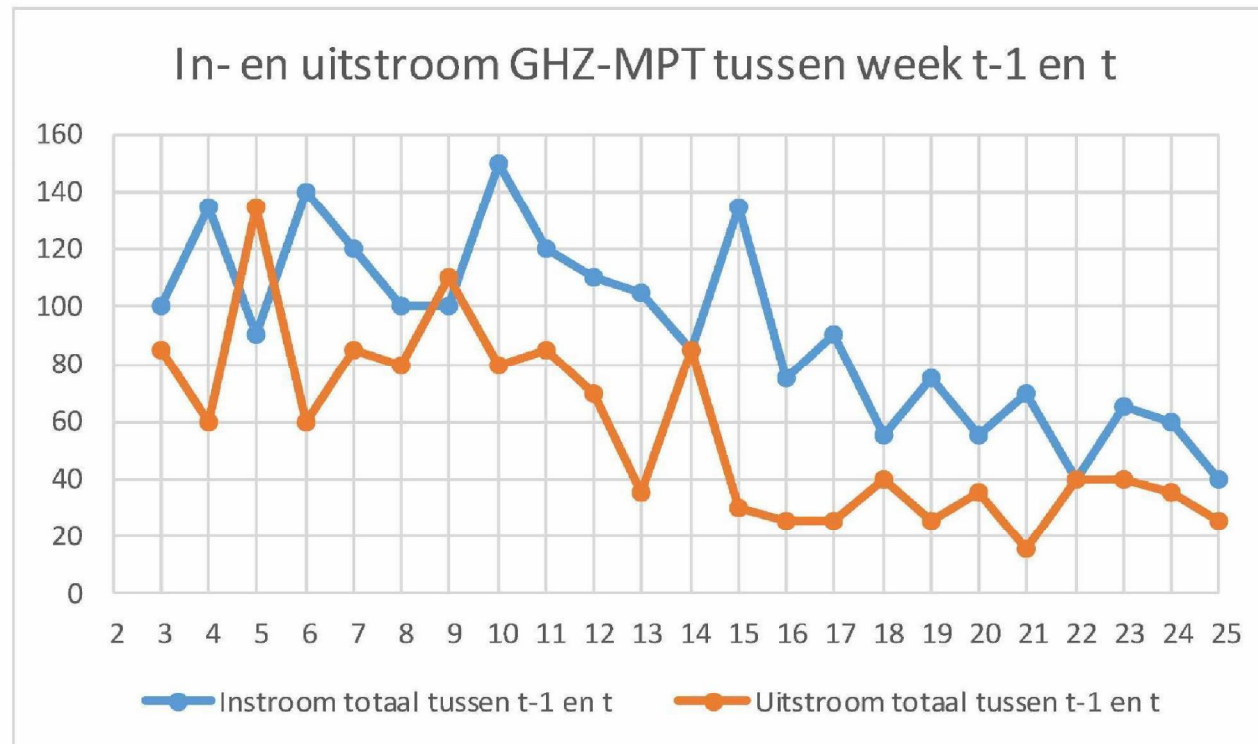




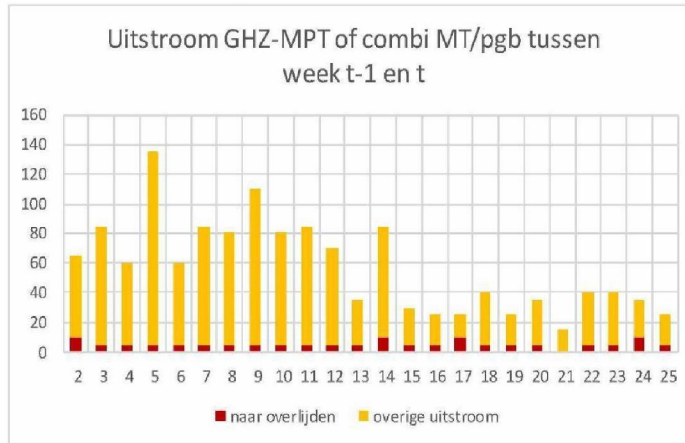
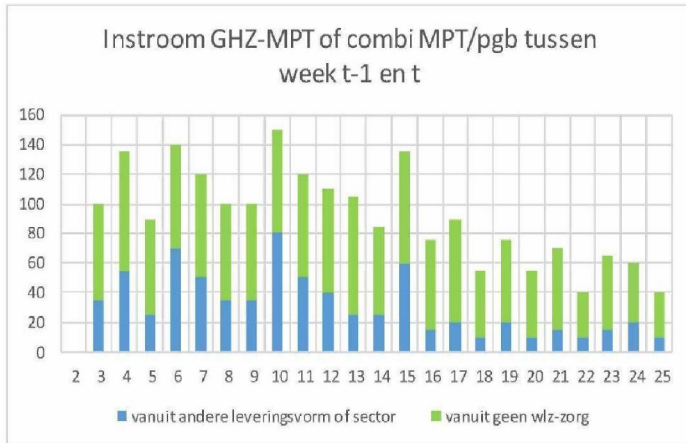
## 8. Gehandicaptenzorg MPT of combi MPT/pgb



## GHZ-MPT in- en uitstroom

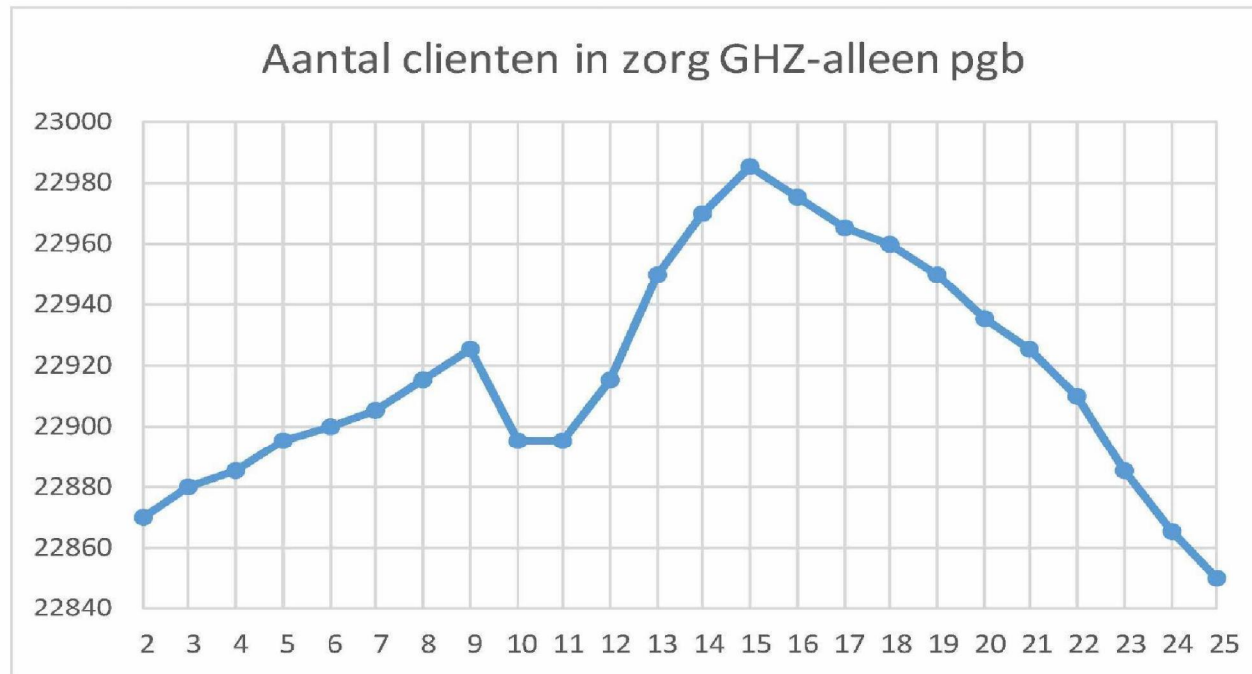


# GHZ MPT in- en uitstroom

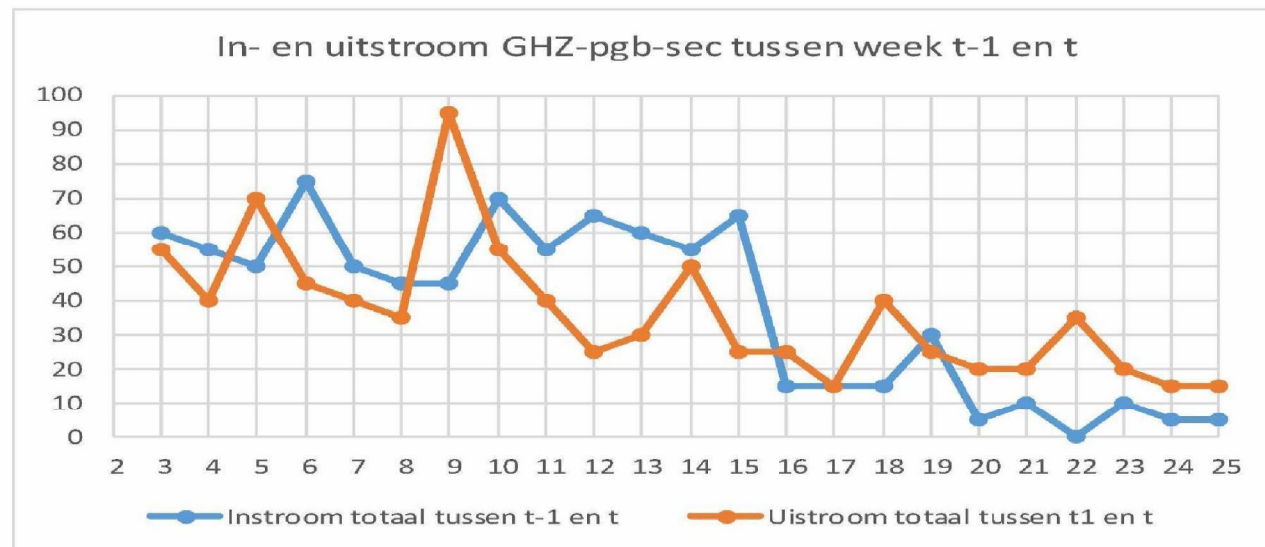




## 9. Gehandicaptenzorg – pgb sec



## GHZ-pgb in- en uitstroom



# GHZ pgb-sec in- en uitstroom

